

Eden CHO CD Media

Optimized CD media for high protein production in CHO cell culture

As early as 1998, BioEngine developed the first serum-free medium for CHO cells in China. With deep understanding of the key technologies and parameters of large-scale culture of CHO cells, BioEngine has continuously upgraded and optimized the medium formulation and manufacturing process. Based on rich project experience and innovative iBioG-Med medium development platform, the first *Eden* CHO CD medium was launched in 2018 to promote a high productivity in large-scale CHO cell culture. So far, *Eden* CHO CD media have been applied to 70+ clinical projects.

Features

- SF, PF, ADCF, CD
- DMF Filing in Progress
- Universality: Support the culture of various CHO cell lines (CHO-K1, CHOZN, Horizon, CHO-S, CHO-DG44, etc.) in fed-batch, concentrated fed-batch and perfusion cultures

Advantages

- High Yield:** *Eden* media increase antibody/protein yield by an average of 30%, achieving impressive yields of up to 14g/L in fed-batch culture, and reducing production costs.
- Glycosylation Control:** Our optimized medium formulation allows precise glycosylation fine-tuning, with various modulators available.
- Regulatory Compliance:** ISO13485:2016 and MDSAP certified, meeting compliance requirements in Europe and the US. Traceable data supports IND and BLA applications.
- Stable Quality:** Our "2 local + 1 imported" raw material suppliers model ensures stability of supply chain. Advanced CMPM process enables excellent batch consistency.
- Professional Technical Support:** Expert team with extensive project experience provides comprehensive technical support and solutions to ensure your success in CHO cell culture.



Eden CHO CD Media

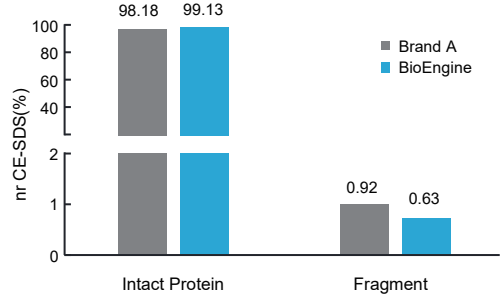
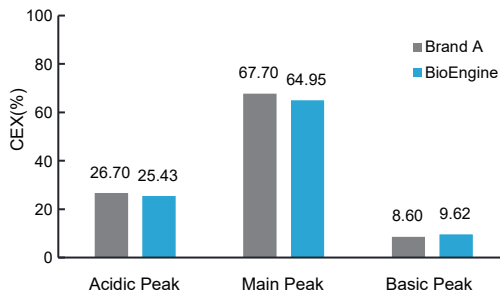
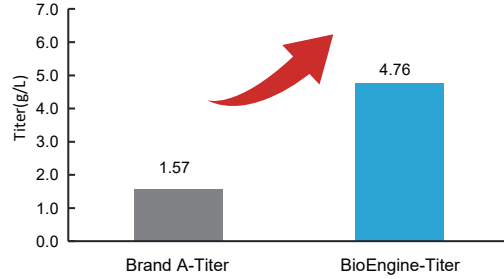
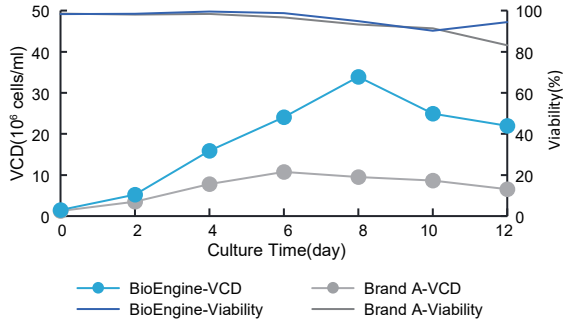
Ordering Information

Meida Kit	Product	Cat. No.	Form	Size	Packaging	Notes	
Eden 100 Kit new	<i>Eden B100S</i> Basal Medium	EXP0116401	Powder	200L	Bag	• SF, PF, ADCF, CD	
		EXP0116402	Powder	10L	Bag		
	<i>Eden F100aS</i> Feed Medium		EXP0116501	Powder	20L	Bag	• Recommended for culturing CHOZN*, CHO-K1, CHO-S cells *Cytokines (Insulin/IGF) are needed when culturing CHOZN.
			EXP0116502	Powder	1L	Bag	
	<i>Eden F100bS</i> Feed Medium		EXP0116601	Powder	20L	Bag	
			EXP0116602	Powder	1L	Bag	
Eden 601 Kit 🔥	<i>Eden B601S</i> Basal Medium	EXP0115601	Powder	200L	Bag		
		EXP0115602	Powder	100L	Bag	• SF, PF, ADCF, CD	
		EXP0115603	Powder	10L	Bag		
	<i>Eden F602aS</i> Feed Medium	EXP0115701	Powder	20L	Bag	• Recommended for culturing CHO-K1, Horizon, CHO-S, CHO-DG44 cells	
		EXP0115702	Powder	1L	Bag		
		<i>Eden F600bS</i> Feed Medium	EXP0108801	Powder	10L		Bag
	EXP0108802	Powder	1L	Bag			
Tuner Product	Cat. No.	Form	Size	Packaging	Notes		
<i>Tuner-Sia</i>	EXP0119101	Powder	100g	Bag	For modulating sialylation of antibody		
<i>Tuner-Gal</i>	EXP0119201	Liquid	1L	Bottle	For modulating galactosylation of antibody		
	EXP0119202	Liquid	100ml	Bottle			
<i>Tuner-Lac</i>	TP0200401E	Liquid	200ml	Bottle	Induce lactate consumption in the later stage of cell cultures		

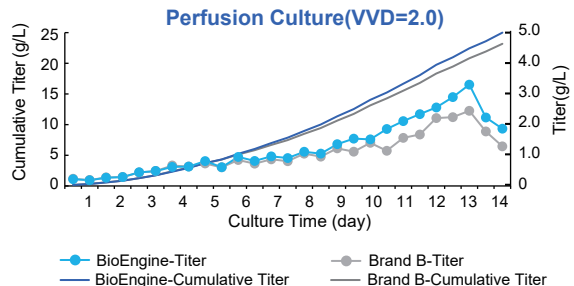
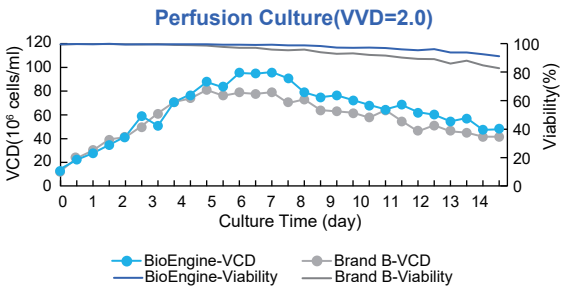
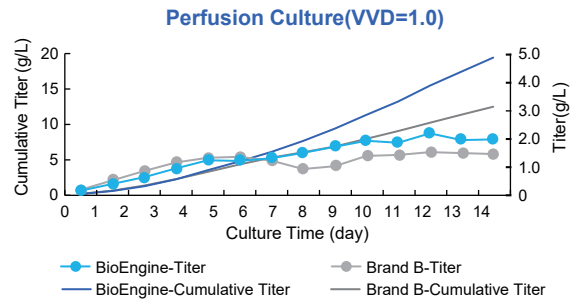
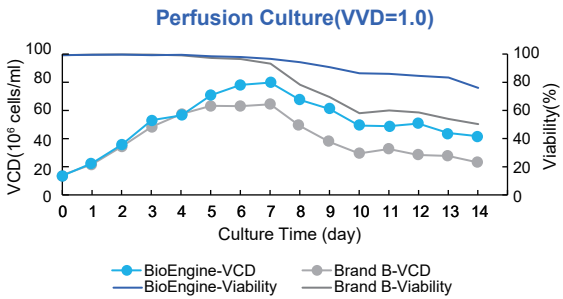
To adjust other parameters, please contact BioEngine technical team.

Performance

⦿ In fed-batch culture process, *Eden* CHO CD media demonstrated significant improvements compared to other brands, including enhanced cell growth rate, maximum viable cell density, and cell viability at harvest. The yield has increased by **200%** than Brand A, and the quality attributes, such as charge distribution and aggregation, meet the customer's requirements. Consequently, the customer's production costs have been effectively reduced.



⦿ In perfusion culture process, *Eden* CHO CD media demonstrated superior performance than other brands. When VVD=1.0, volumetric productivity (Vp) can reach up to 2.2 g/L/day, and the cumulative product expression in 14 days can reach 19 g/L, **55%** higher than Brand B. When VVD=2.0, Vp can reach up to 3.3g/L/day, and the cumulative product expression in 14 days can reach 25 g/L.



30 years of ingenuity on creating a novel drive for cell culture



BioEngine Official Website

Add: Floor 4, Building 3, Lane 396, Lvzhou Ring Road, Minhang District, Shanghai, China

Tel: (86)21-68582660

Web: www.bio-engine.com.cn/en

E-mail: globalsales@bio-engine.com.cn